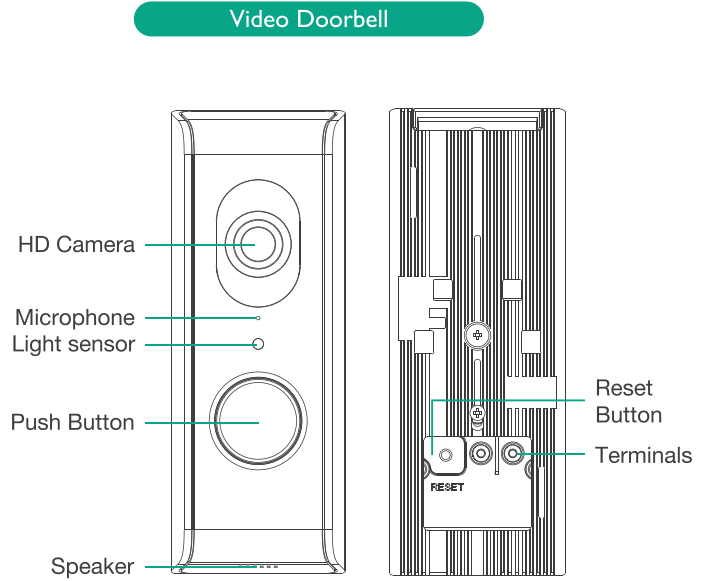


ALC™

SIGHT HD

Remote Monitoring Anytime from Anywhere

Video Doorbell



NOTE: Avoid installing in a location which requires the wireless signal to pass through cement, concrete and metal structures. This will reduce the transmission range.

Recommendations for best system performance:

- **iOS 9.0** or above.
- **Android:** Android™ smartphone or tablet (version 4.4x or above).
- **Storage:** Class 10 MicroSD memory card (up to 128 GB).
- **Bandwidth:** 512Kbps or above upload/download speed suggested.

Model AWF71D

QUICK START GUIDE



FCC Compliance Statement: This device complies with part 15 of the FCC Rules. Operation is subject to the following two conditions: (1) This device may not cause harmful interference, and (2) this device must accept any interference received, including interference that may cause undesired operation.

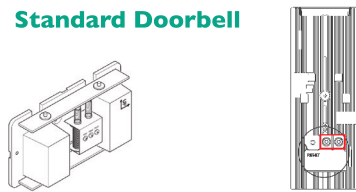
Let's Get Started

CAMERA INSTALLATION + SETUP

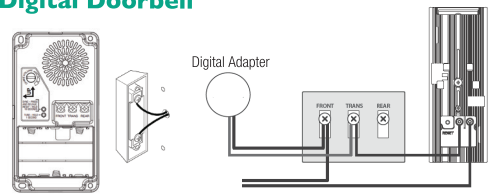
IN THE BOX

- Indoor camera
- x2 Mounting Brackets
- Screw/Anchor Kit
- Mounting Template
- Digital Adapter & Sticker
- Wire Kit
- Quick Start Guide
- 16GB MicroSD Card (Installed)

Standard Doorbell



Digital Doorbell

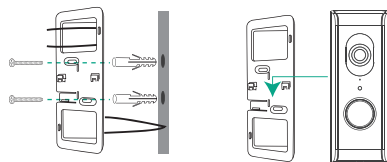


- If you have a mechanical doorbell (looks similar to above), which will make the traditional "ding-dong" sound, then do the following:
 - Turn off power to the doorbell.
 - Remove the existing doorbell and disconnect the two wires.
 - Connect the two wires as shown then go to step 2 below.

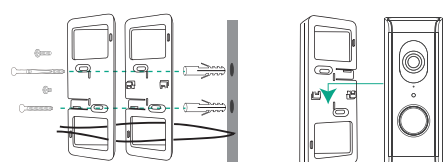
- If you have a digital doorbell (looks similar to above), which usually plays a short musical tune, then do the following:
 - Turn off power to the doorbell.
 - Remove the existing doorbell and disconnect the two wires.
 - Install the digital adapter using the included sticker to the door chime box as shown then go to step 2 below.

NOTES: It does not matter which wire connects to which terminal of the doorbell. For digital adapter connection, it also does not matter which digital adapter wires are connected to the Front or Trans terminals.

If doorbell is next to door



If doorbell is on side wall



- Install the bracket where the previous doorbell was, next to the door, using the template, the 2 small screws and if necessary, the anchors. Make sure the wires are fed through the appropriate square opening in the bracket. Then line up the video doorbell on the bracket and slide down until secure. When installed, turn power back on. Wait until the LED ring repeatedly flashes 3 times (approximately 1.5 minutes for the unit to re-boot), then continue to the Remote Viewing section.

- Stack the brackets with tabbed bracket on top to create the 30° angle. Use the included template and install on the side wall where the previous doorbell was using one large screw and one small screw and if necessary, anchors. Make sure the wires are fed through the appropriate square opening in the brackets. Line up the video doorbell on the bracket and slide down until secure. When installed, turn power back on. Wait until the LED ring repeatedly flashes 3 times (approximately 1.5 minutes for the unit to re-boot), then continue to the Remote Viewing section.



Model AWF71D

Wireless Made Simple.

REMOTE VIEWING

iOS **DEVICE SETUP**

FREE APP DOWNLOAD



1 From your smart device, DOWNLOAD and INSTALL the free **ALC SightHD App**.

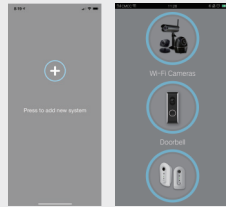
2 After power is turned on, allow the camera up to 90 seconds to boot up and the LED Ring flashes 3 times.

3 Now Launch the ALC SightHD App and the Setup Wizard will appear.

4 Tap **+** to start the Wizard and then tap Doorbell.

5 Tap **New Doorbell** and the unit will start searching.

NOTE: If the mobile device's bluetooth is not turned on, a message will appear requesting to have the bluetooth setting turned on.



6 Select your home network from the menu, and then enter your home network's Wireless Password.

7 At the next screen enter a new password/security code twice and remember it or write it down. Tap **Save**.

8 Tap the Play icon or preview picture for live video.



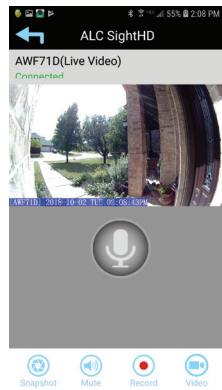
NOTE: Screen shots and icons may vary due to continuous updates to App and software development.

LIVE VIEWING





LIVE VIEW


1 **Android:** Tap the Play icon.
Apple: Tap on the preview picture.

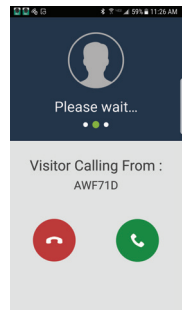
PINCH AND ZOOM: To zoom in or out, use the simple pinch and zoom gesture with this app.



FEATURES

-  Tap to Snapshot screen images in Live View. Images automatically save to smartphone's camera roll or gallery.
-  Tap to RECORD. Recordings save to MicroSD card (pre-installed).
-  To speak through the doorbell's speaker, using your Android or Apple device, tap and hold this icon and speak; the voice will be heard through the doorbell's speaker.
-  Tap to turn volume On or Off in the Live View mode.

-  When the Video Doorbell button is pushed, your smartphone will ring like a regular phone call. It is your Doorbell calling you.
-  If the Video Doorbell detects Motion, you will immediately receive a Push Notification to your smartphone.
-  Tap to RETURN to the main page.



LIVE VIEW RECORDING on MicroSD CARD*

1 A MicroSD Card comes pre-installed, this is where the video will be saved.

2 Manually RECORD video from Live View by tapping Record icon. The App will record for one minute.



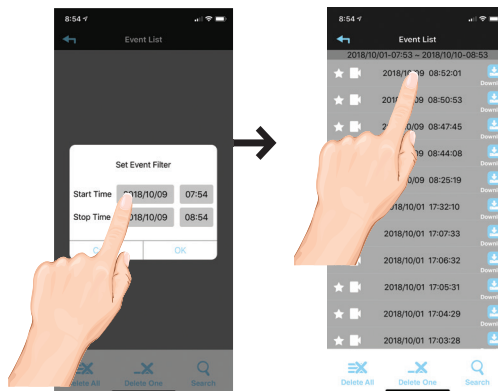
Motion Recording

If set to Software Sensitivity when motion is detected on the video camera, the camera will automatically record for one minute and then stop recording. To change the DETECT MODE, go to **Edit Setting**, tap **Setting** and then tap **Advanced**.

The Advanced Settings will ask for the admin password; default password is 123456. Select Sensitivity Setting to change.

PLAYBACK

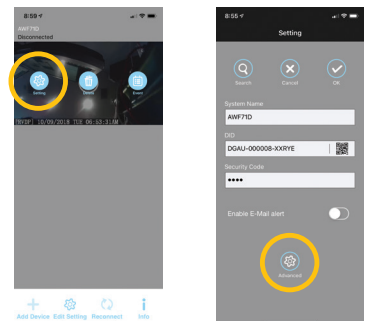
- 1 Tap **Edit Setting**, tap **Setting** and then **EVENT** icon.
- 2 Select the Start and Stop date and time on the Select Event Filter and tap **OK**.
- 3 Tap the **FILE** that you want to playback from the list.



ADVANCED SETTINGS

On the Home Page (not Live View) Tap **EDIT SETTING** at the bottom of the screen, then tap **SETTINGS** icon and then tap **ADVANCED** (the default password is 123456) to see the Advanced Feature options:

- Chime Setting
- SDCard Setting
- Video Setting
- Sensitivity Setting
- And much more



NOTE: Do not submerge camera in water. **STRANGULATION HAZARD:** Infants have STRANGLED in power cords. Keep power cords more than 3 feet away from cribs. When using your equipment, always follow basic safety precautions to reduce the risk of fire, electric shock and injury to persons. Illustrations are for reference only. Actual product specifications may vary. For additional precautions and product information, please see owner's manual at www.ALCWireless.com/support

For detailed installation and setup, please refer to the Model AWF71D complete User's Guide available on our website:
www.ALCWireless.com/support



SCAN
TO VIEW
COMPLETE
USER'S GUIDE